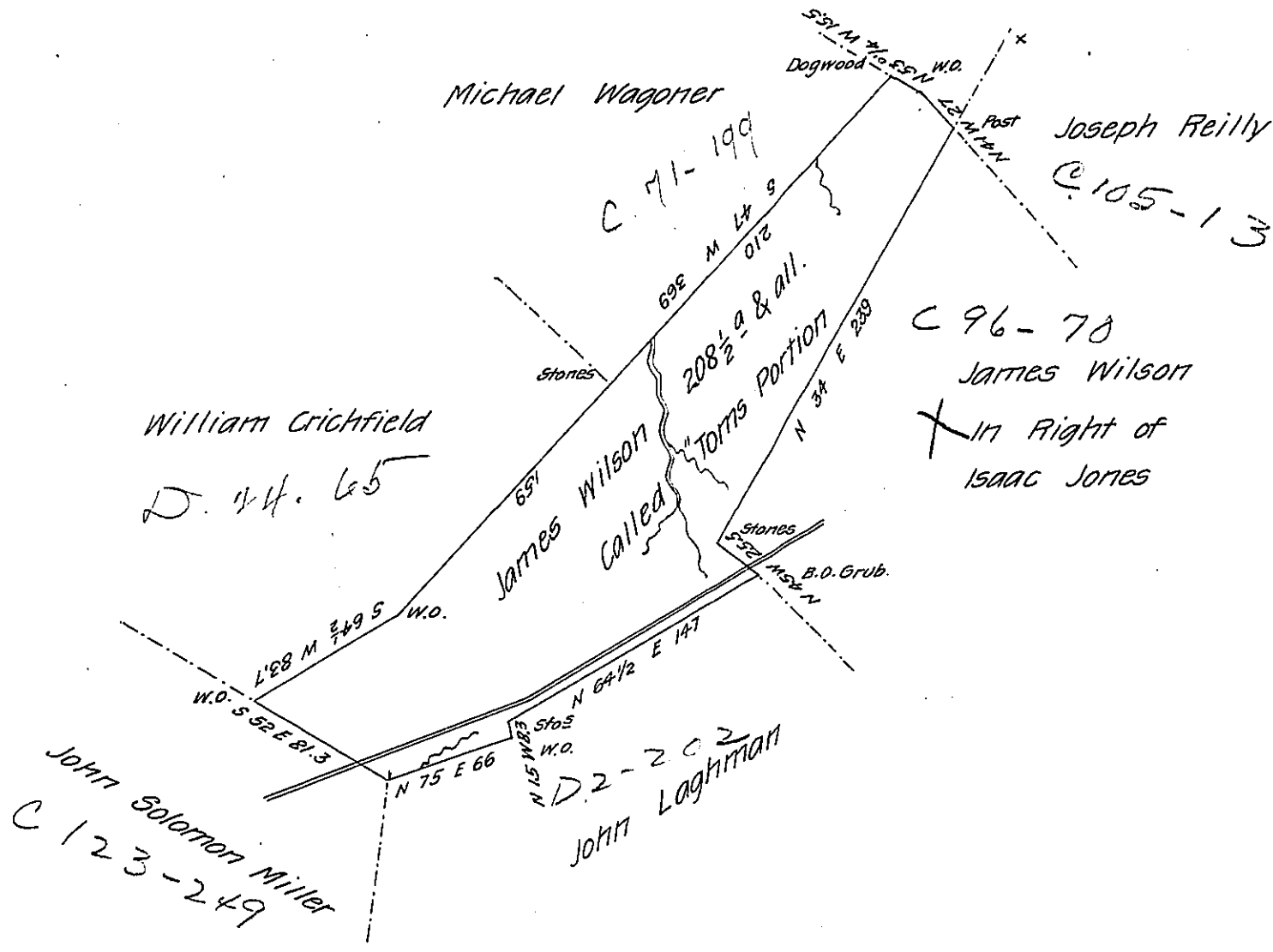


D. 17-102

John Weimer



Situate on the Waters of Comes Creek in Milford Township late Bedford  
 now Somerset County and Surveyed the 14<sup>th</sup> day of August <sup>1795</sup> by Alexander M. Clean  
 Esquire late D.S. in Pursuance of a Warrant dated the 15<sup>th</sup> day of April 1793 and  
 Certified 17<sup>th</sup> October 1801 by

John McClean D.S.

To Samuel Cochran Esquire  
 Surveyor General.

IN TESTIMONY that the above is a copy of the original remaining on file in  
 the Department of Internal Affairs of Pennsylvania, made  
 conformably to an Act of Assembly approved the 16th day of  
 February, 1833, I have hereunto set my Hand and caused  
 the Seal of said Department to be affixed at Harrisburg,  
 this seventh day of June 1907

*Henry Hoover*  
 Secretary of Internal Affairs.